

Goods Wagons 1975-1995 for TS Classic



MANUAL

Version 1.0 build 20230831

Table of Contents

Introduction.....	3
Installation Tips	4
General	4
Other tips.....	4
Retro Canvas Route	4
Browser name index.....	6
Deutsche Bundesbahn/Deutsche Bahn.....	9
NS/ NS Cargo	12
SBB.....	21
SNCF	21
Colophon/Credits	22

Disclaimer DoveTail Games Ltd.

IMPORTANT NOTICE. This is user generated content designed for use with DoveTail Games Limited's train simulation products, including Train Simulator Classic. DoveTail Games Limited does not approve or endorse this user generated content and does not accept any liability or responsibility regarding it.

This user generated content has not been screened or tested by DoveTail Games Limited. Accordingly, it may adversely affect your use of DoveTail Games's products. If you install this user generated content and it infringes the rules regarding user-generated content, DoveTail Games Limited may choose to discontinue any support for that product which they may otherwise have provided.

The RailWorks EULA sets out in detail how user generated content may be used, which you can review further here: www.railsimulator.com/terms. In particular, when this user generated content includes work which remains the intellectual property of DoveTail Games Limited and which may not be rented, leased, sub-licensed, modified, adapted, copied, reproduced or redistributed without the permission of DoveTail Games Limited."

Introduction

When the first version of TS Classic was disclosed in 2009 as Rail Simulator, it was not directly apparent what promise the new trainsim had for the immediate future. Not until the sim was rolled out in 2010 and 2011 as Railworks and quickly gained popularity in the community it became clear that there was a great need for modern rolling stock, a thought that was mainly felt within the HCC user group.

To meet this demand, Wilbur Graphics built a relatively large range of modern rolling stock in a relatively short period of time, which was also mainly an extension of the ChrisTrains product range. In those years, Railworks' performance was still a critical factor, so that the detailing of the models could not be subject to too high requirements. In addition, cracked versions of 3ds Max had to be used as building platform. The specific information for the development of Railworks objects in 3ds Max was only fragmentary available or missing. Sadly, knowledge within the HCC was only sparsely shared or, at times, kept closely secret, which of course adversely affected the characteristics of our trains.

Now, more than ten years later, those TS objects are still part of our program, but because in the last five or six years our attention has been focused on rolling stock from era III, the era IV stock has clearly lagged behind the possibilities offered by the improved performance of today's hardware in terms of quality. In the meantime, also many years ago, we have made the switch to Blender, an open source application with almost the same functionality as 3ds Max. At the same time, our WG rolling stock for era III has benefited greatly from the cooperation with TrainworX. These advanced methods are now also being applied when updating our range of Era IV rolling stock, the upgrade of which is in full swing.

As a result of this project, this release includes a complete range of WG goods wagons that can be deployed in the period 1975-1995. The emphasis is on four-axle rolling stock that may be run in closed freight trains, with UIC numbers and inscriptions, including hazardous cargo codes. All wagons have been provided with improved textures and details as part of this midlife update. Not unimportantly, all wagons of this release are compatible with other Wilbur Graphics products, such as the Retro Canvas Route, the SE Tutorial Route and the 'Era IV' versions of the NS 1100 and 1700. Although the *display names* (which are shown as identification in the QuickDrive menu and in the Object Browser of the Scenario Editor) have been adjusted here and there, the unique object IDs have remained unchanged. The only exception are the boiler cars for era IV with the designation *ZZw51*, because you can now also find them under the correct UIC classification *Zas*.

This handbook presents the complete range of cars within this release, with rolling stock grouped by railway company, preceded by an index.

Installation Tips

General

The *WG Goods Wagons Era IV* release by Wilbur Graphics has been made available as a .zip-file contains, apart from a `Readme_EN.txt`, the following items:

- Folder `Manuals\Wilbur Graphics` with English, Dutch and German language manuals:

`WG_Güterwagen_EpIV_Handbuch_V1_0.pdf`
`WG_Goods_wagons_EraIV_Manual_V1_0.pdf`
`WG_Goederenwagens_tp4_Handboek_V1_0.pdf`

- installer `WG_Goods_wagons_tp4_V10_build_20230831.exe`

After launching the installer, you will be prompted to

- Select a language for the installer (Dutch/English/French/German)
- Accept the License Terms (EULA)

See the `release_notes.txt` for the latest changes and improvements.

Other tips

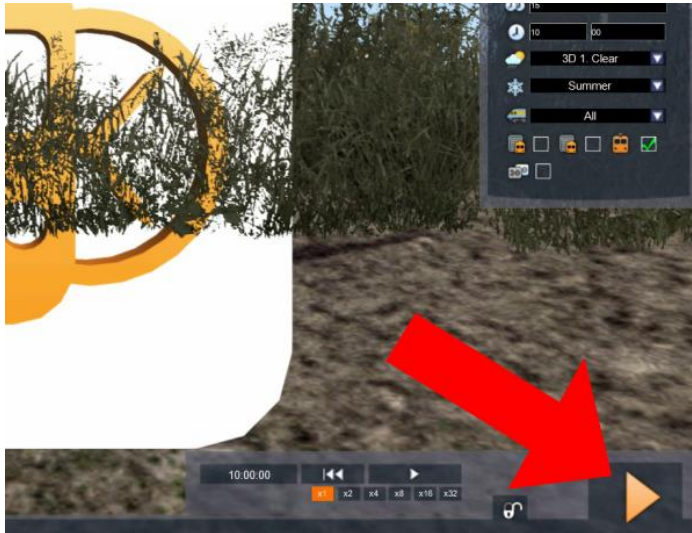
- The .zip file must be fully unpacked before you can begin the installation.
- If the installation software cannot find the Railworks folder on your system, the reference to this folder in the Windows registry may no longer be valid. This situation occurs if you have moved the Steam environment to another computer or disk drive. You solve this by repeating the installation of Steam.

Retro Canvas Route

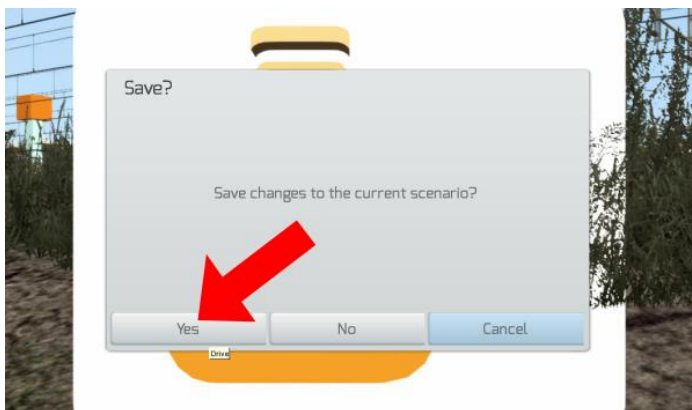
After installing this release, the following window may appear at the start of a scenario ('Broken Consist'):



You can solve this simply by clicking on the EDIT box. TS Classic now starts the Scenario Editor. The following screen will then be displayed:



All you have to do is click the DRIVE button, at the bottom right corner of the screen. The SE will request a confirmation:



Click YES and the scenario will just start now as well as in future.

Browser name index

The Product folder for all wagon types is Wilbur Graphics\Rolling mat, except for the DB VTG Uagnpps, which can be found under Rollmat_de.

In this release, it has been decided to produce the four-axle tankers based on the former Reichsbahn ZZw51 in two identical versions. These wagons, which were previously released with flashing tail lights only have also been fully updated, but are still available under their old browser names in the folder DR_ZZw_51. In view of future releases of routes and/or scenarios, these cars have also been added separately in a new folder DB_Zas.

Deutsche Bundesbahn/Deutsche Bahn

Folder	Display name NL/EN	Display name DE
DB_Fads_176	WG DB Fads 176	WG DB Fads 176
DB_Fals_167	WG DB Cargo Fals 167	WG DB Cargo Fals 167
DB_Fals_167	WG DB VTG Fals 167	WG DB VTG Fals 167
DB_Glmhs	WG DB Glmmhs57	WG DB Glmmhs57
DB_Zas	WG DB Zas Esso	WG DB Zas Esso
DB_Zas	WG DB Zas EVA	WG DB Zas EVA
DB_Zas	WG DB Zas Mobil	WG DB Zas Mobil
DB_Zas	WG DB Zas Shell	WG DB Zas Shell
DB_Zas	WG DB Zas VTG	WG DB Zas VTG
DR_ZZw_51	WG DB ZZw 51 Esso 581226 flash	WG DB ZZw 51 Esso 581226 flash
DR_ZZw_51	WG DB ZZw 51 Eva 572355 flash	WG DB ZZw 51 Eva 572355 flash
DR_ZZw_51	WG DB ZZw 51 Mobil 580783 flash	WG DB ZZw 51 Mobil 580783 flash
DR_ZZw_51	WG DB ZZw 51 Shell 582436 flash	WG DB ZZw 51 Shell 582436 flash
DR_ZZw_51	WG DB ZZw 51 VTG 596551 flash	WG DB ZZw 51 VTG 596551 flash
DB_VTG_Uagnpps	WG VTG Uagnpps	WG VTG Uagnpps

NS Cargo

Folder	Display name NL/EN	Display name DE
DB_Eanos	WG DB Eanos 537 6 396	WG DB Eanos 537 6 396
NS_Eanos	WG NS Eanos 537 6 000	WG NS Eanos 537 6 000
NS_Eanos	WG NS Eanos 537 6 253 Cargo	WG NS Eanos 537 6 253 Cargo
NS_Fals_254	WG NS Fals 254 (Kalk)	WG NS Fals 254 (Kalk)
NS_Gs	WG NS Gs	WG NS Gs
NS_Sgns	WG NS Sgns 7	WG NS Sgns 7 leer
NS_Sgns	WG NS Sgns 7 20' PAL	WG NS Sgns 7 20' PAL
NS_Sgns	WG NS Sgns 7 20' P-M-G	WG NS Sgns 7 20' P-M-G
NS_Sgns	WG NS Sgns 7 20' Cotrain	WG NS Sgns 7 20' Cotrain
NS_Sgns	WG NS Sgns 7 20' GTST	WG NS Sgns 7 20' GTST
NS_Sgns	WG NS Sgns 7 20' MARINT	WG NS Sgns 7 20' MARINT
NS_Sgns	WG NS Sgns 7 20' WilburG	WG NS Sgns 7 20' WilburG
NS_Sgns	WG NS Sgns 7 20' Ts-Ts-V	WG NS Sgns 7 20' Ts-Ts-V
NS_Sgns	WG NS Sgns 7 20' hccItrainsim	WG NS Sgns 7 20' hccItrainsim
NS_Sgns	WG NS Sgns 7 20' Gouda VV	WG NS Sgns 7 20' Gouda VV
NS_Sgns	WG NS Sgns 7 40' PAL	WG NS Sgns 7 40' PAL
NS_Sgns	WG NS Sgns 7 40' Cotrain	WG NS Sgns 7 40' Cotrain
NS_Sgns	WG NS Sgns 7 40' Cotrain	WG NS Sgns 7 40' Cotrain
NS_Sgns	WG NS Sgns 7 40' GTST	WG NS Sgns 7 40' GTST
NS_Sgns	WG NS Sgns 7 40' MARINT	WG NS Sgns 7 40' MARINT
NS_Sgns	WG NS Sgns 7 40' TrainworX	WG NS Sgns 7 40' TrainworX
NS_Sgns	WG NS Sgns 7 40' TSIG	WG NS Sgns 7 40' TSIG
NS_SSImas53	WG NS Rs	WG NS Rs
NS_SSImas53	WG NS Rs GP 200 trucks	WG NS Rs GP 200 Drehgestelle
NS_SSImas53	WG NS Rs trekkers/tractors	WG NS Rs Schlepper
NS_SSImas53	WG NS Rs NKF	WG NS Rs NKF
NS_SSImas53	WG NS Rs rails/track	WG NS Rs Gleis
NS_SSImas53	WG NS Rs sparren/spars	WG NS Rs Kiefer
NS_SSImas53	WG NS Rs logs/stammen	WG NS Rs Stämme
NS_SSImas53	WG NS Rs WilburG	WG NS Rs WilburG
NS_Zas	WG NS Zas Esso NL	WG NS Zas Esso NL
NS_Zas	WG NS Zas NAM	WG NS Zas NAM

NS_30m3_ketelwagens	WG NS 30M3 Zecs BON	WG NS 30M3 Zecs BON
NS_30m3_ketelwagens	WG NS 30M3 Zecs PAM	WG NS 30M3 Zecs PAM

SBB/CFF/FFS

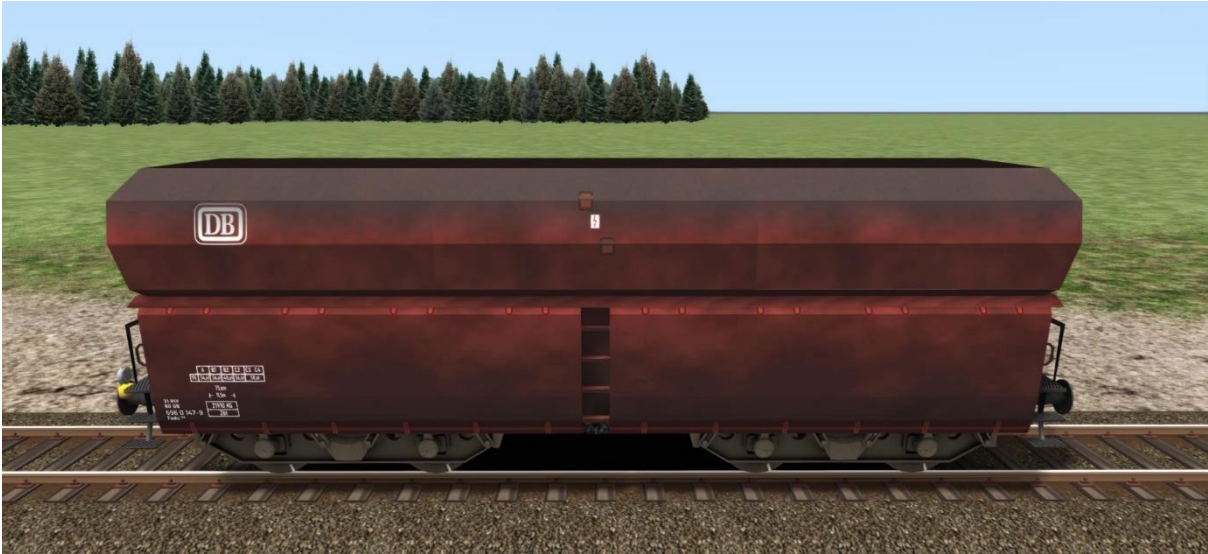
<i>Folder</i>	<i>Display name NL/EN</i>	<i>Display name DE</i>
SBB_Gbs	WG SBB Gbs	WG SBB Gbs
SBB_Gs	WG SBB Gs	WG SBB Gs

SNCF

<i>Folder</i>	<i>Display name NL/EN</i>	<i>Display name DE</i>
SNCF_Gas	WG SNCF Gas A	WG SNCF Gas A



Deutsche Bundesbahn/Deutsche Bahn



WG DB Fads 176



WG DB Cargo Fals 167



WG DB VTG Fals 167



WG DB Glimmhs57



WG DB Zas Esso



WG DB Zas EVA



WG DB Zas Mobil



WG DB Zas Shell



WG DB Zas VTG



WG VTG Uagppps

NS/ NS Cargo



WG DB Eanos 537 6 396



WG NS Eanos 537 6 253 Cargo



WG DB Eanos 537 6 396



WG NS Fals 254 (Kalk)



WG NS Sgns 7



WG NS Sgns 7 20' PAL



WG NS Sgns 7 20' P-M-G



WG NS Sgns 7 20' Cotrain



WG NS Sgns 7 20' GTST



WG NS Sgns 7 20' MARINT



WG NS Sgns 7 20' WilburG



WG NS Sgns 7 20' Ts-Ts-V



WG NS Sgns 7 20' hcc!trainsim



WG NS Sgns 7 20' Gouda VV



WG NS Sgns 7 40' PAL



WG NS Sgns 7 40' Cotrain



WG NS Sgns 7 40' GTST



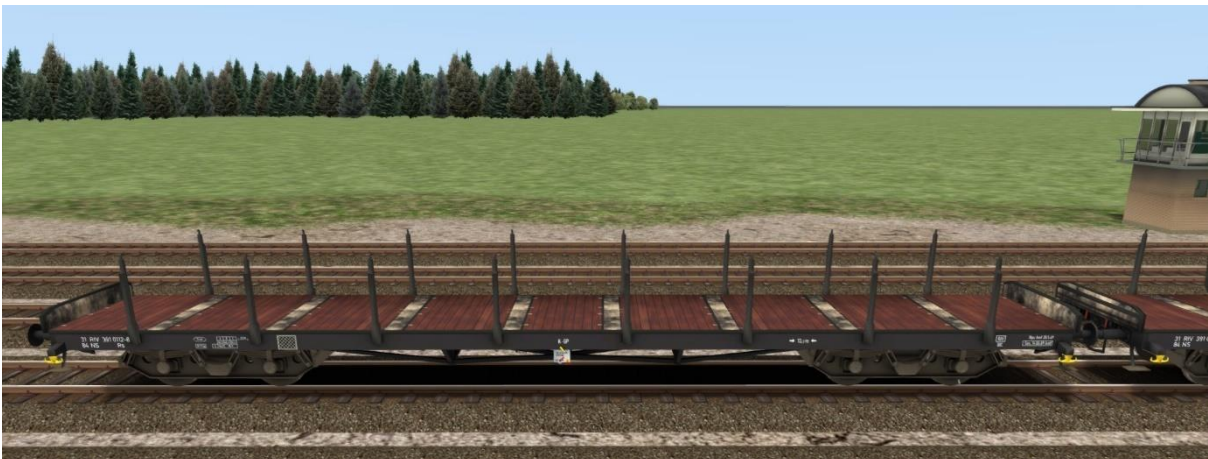
WG NS Sgns 7 40' Gouda VV



WG NS Sgns 7 40' TrainworX



WG NS Sgns 7 40' TSIG



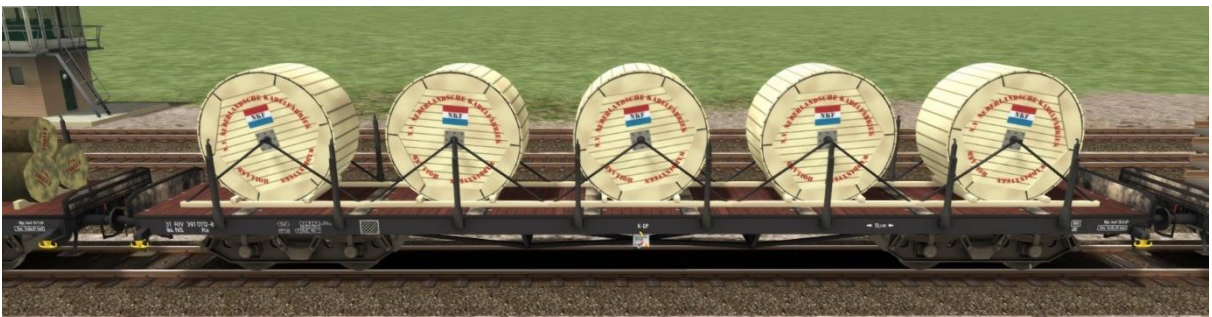
WG NS Rs



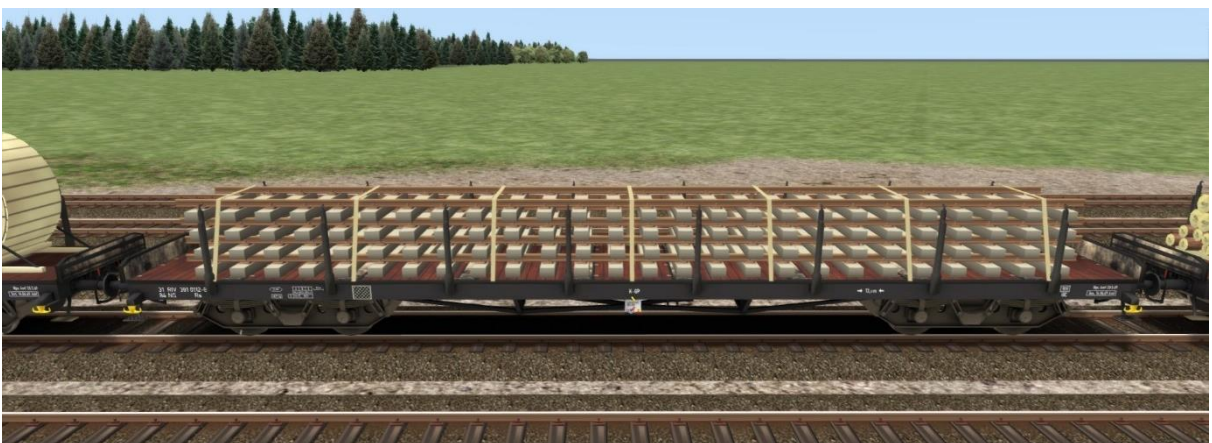
WG NS Rs GP 200 trucks



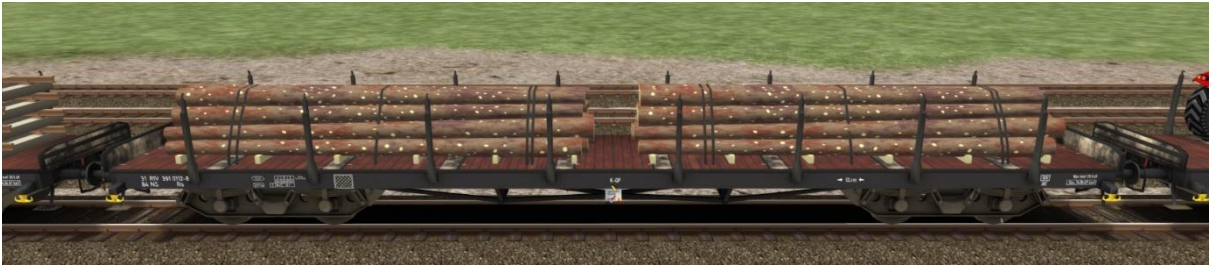
WG NS Rs trekkers/tractors



WG NS Rs NKF



WG NS Rs rails/track



WG NS Rs sparren/spars



WG NS Rs logs/stammen



WG NS Rs WilburG



WG NS Zas Esso NL



WG NS Zas NAM

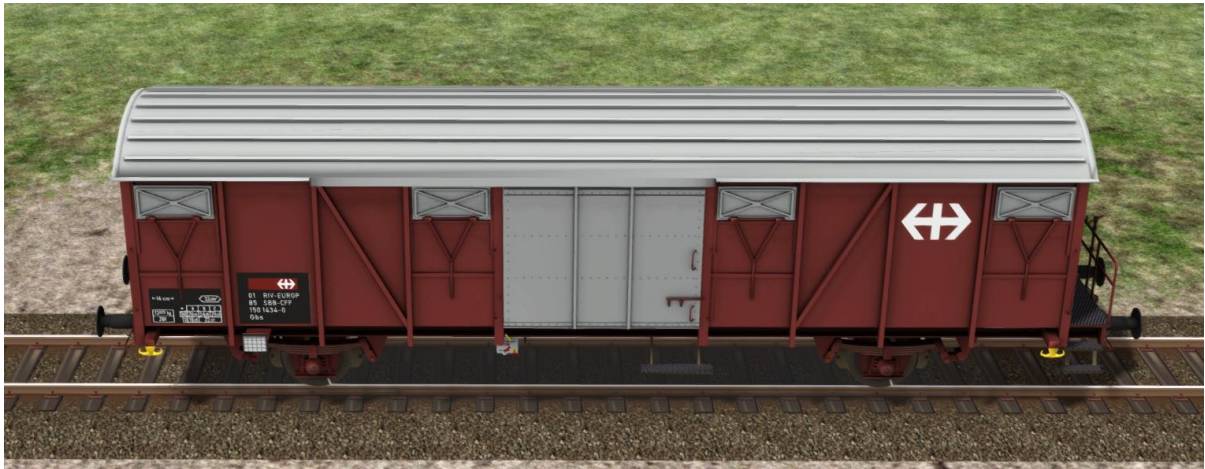


WG NS 30M3 Zecs BON



WG NS 30M3 Zecs PAM

SBB



WG SBB Gbs



WG SBB Gs

SNCF



WG SNCF Gas A

Colophon/Credits

Development and production:

© Wilbur Graphics, Henk van Willigenburg (www.wilburgraphics.com)

Tips and advice:

ChrisTrains.com

TrainworX (Paul Mersel)

Ton van Schaik

Reinhart190953

Testing:

Ton van Schaik

Facebook:

Wilbur Graphics

<https://www.facebook.com/wilburgraphicspage/>

Version 1.0 build 20230831

